



The Sanara

A fresh take on the traditional pool cabana.

New to the Summerwood line-up, the Sanara is a contemporary cabana that blends effortlessly with any architectural style. This versatile, adaptable poolhouse can be customized to meet all your backyard needs: the covered canopy offers a shady spot for open-air entertaining and pool-side lounging, while the multi-functional enclosure can serve as storage for pool accessories or a convenient space to change after a swim. With its flexible floorplan, your options are endless!

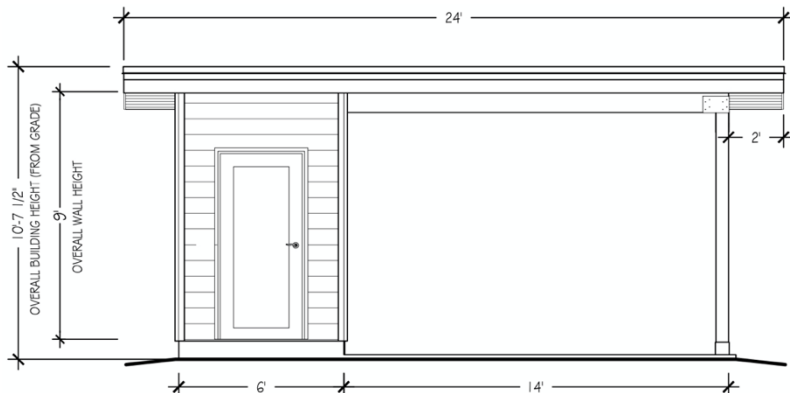
STANDARD FEATURES

- Fresh, modern design
- Contemporary flat roof (0.5/12 pitch) with 2' overhang
- Covered canopy for entertaining and relaxing
- Premium STK Western Red Cedar siding + stainless steel fasteners
- Enhanced siding package**
- Full 2-year warranty on materials and craftsmanship!

POPULAR OPTIONS

- Maintenance-free Canexel in a variety of colors
- Maintenance-free Siparila wood siding
- Clear cedar siding
- STK or Clear cedar-wrapped posts and beams*
- Doors + windows in various sizes and materials

FINISHING THE INSIDE: The inside of your Sanara is ready for the addition of plumbing, electrical, insulation, and any other [interior finishes](#) you have in mind. Just let us know your plans!



<< 10x20 Sanara (dims approximate)

MATERIAL SPECIFICATIONS

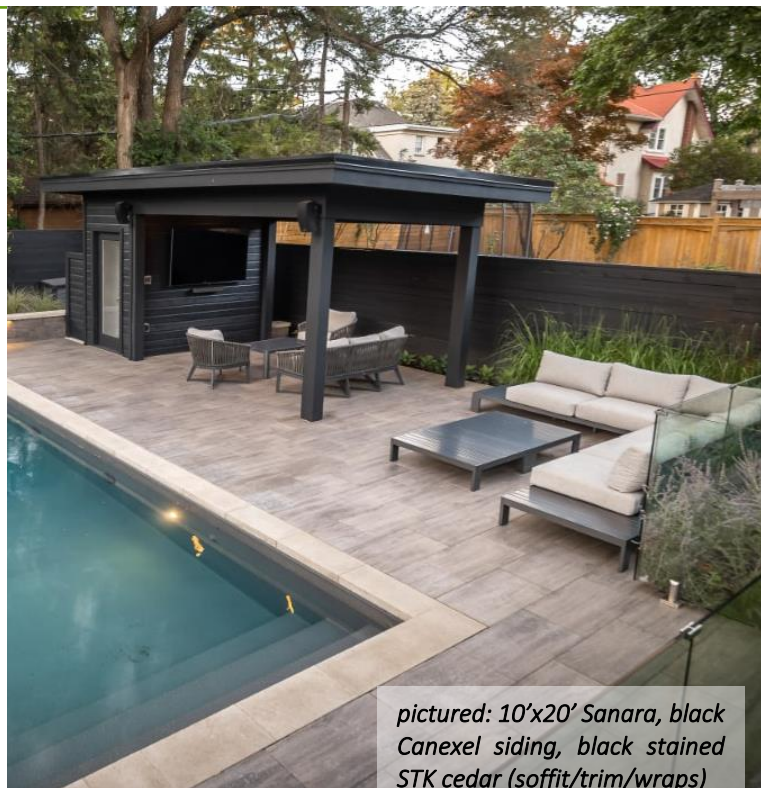
Our materials are chosen for their exceptional quality, durability, and breathtakingly good looks! There are so many ways to customize the inside and outside of your Sanara that they can't all be listed here. Learn more by visiting our [building materials](#) page.

| | STANDARD | POPULAR OPTIONS + UPGRADES |
|---------------|--|---|
| POSTS + BEAMS | - 6x6 cedar posts | - 6x6 Douglas fir or pressure treated posts - STK or clear cedar-wrapped posts and beams* |
| ROOF | - engineered roof system - 5/8" T&G plywood sheathing - 1x8 STK Western Red Cedar channel soffit/ceiling | - EPDM (rubberized membrane) roofing material (comes standard with installation) - 6" clear cedar T&G V-joint soffit/ceiling |
| SIDING | - ½" plywood sheathing - stainless steel fasteners - 1x8 STK Western Red Cedar channel siding | - 6" clear cedar T&G V-joint siding - maintenance-free Canoxel or Siparila wood siding |

****ENHANCED SIDING PACKAGE:** a layer of sheathing and house wrap (a breathable, water-resistant barrier) that add shear strength and act as an additional plane of protection against moisture.

DIMENSIONS AND SIZES

The Sanara is available in any size you like, with a flexible enclosure to opening ratio—the layout is completely up to you! The height of the structure is based on the depth, door size, and post/beam dimensions. To see a range of optional sizes, visit the [style page](#). To better visualize the Sanara's layout, take a [3D tour](#).



EASE OF ASSEMBLY

The Sanara includes easy-to-follow instructions and diagrams that will walk you through every step of the building process. Alternatively, the "advice" section of our website is full of helpful tips on what to look for in a good [contractor](#). Whatever you choose, our online and telephone [assembly support](#) are always within reach!

INSTALLATION

Are you in our installation area? If your site is within a few hours of our Toronto showroom, Summerwood can install your Sanara for you!

FOUNDATION

The preferred [foundation](#) for a Sanara is a floating concrete slab. Piers may also be an option.

BUILDING PERMITS

The need for a permit hinges on a number of variables, including your Sanara's height, footprint, location, intended use, and more. Check with your local by-law office to find out if your Sanara will require a permit. If you do need a permit, we will provide you with all the necessary details, drawings, and guidance to make it easy. Visit our [building permits](#) page for more info.



📞 800.663.5042

🌐 www.summerwood.com

📷 [@summerwood_products](https://www.instagram.com/summerwood_products)

✉️ design@summerwood.com